

FloraLife® Blend Center

Installation and user instructions



FloraLife® Blend Center

Installation and user instructions

What you will need

1- Phillips screwdriver



What's in the box

1- 2 x 6 ft hose with standard fittings

2- 1 x FloraLife® Blend Center

3- Solution uptake tube

4- Dispensing gun

5- Solution uptake tube weight

6- Hose anchor

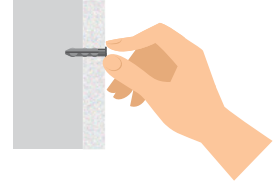
7- Installation screws and plugs (3 of each)

8- 10 dosing tips (2 Brown, 2 Turquoise, 2 Green, 2 Red, 2 Pink)

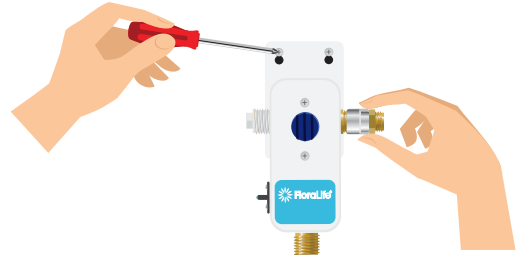


Installing the unit

1- We recommend using the plugs when installing into surfaces such as plasterboard.

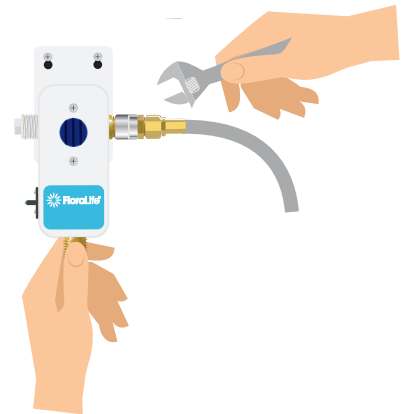


2- Using the 2 screws provided, screw the unit onto your wall/surface.



Attaching the water source and dispensing gun

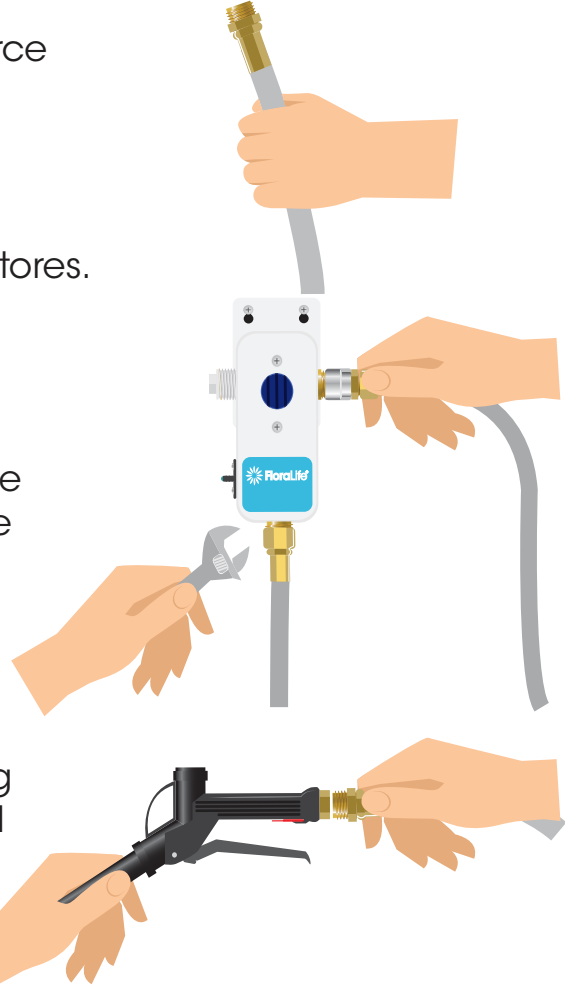
1- Using one of the 6 ft hoses, attach to the right-hand side of the unit by screwing on with your hands.



2- The other end of the water source hose is a standard fitting that can be installed or adapted to any water faucet/connection. Adapters, if needed, can be purchased at local hardware stores.

3- Attach the second 6ft hose to the bottom of the unit in the same manner you attached the water source. This hose is for the dispensing gun.

4- The other end of the dispensing gun hose can now be screwed onto the dispensing gun.

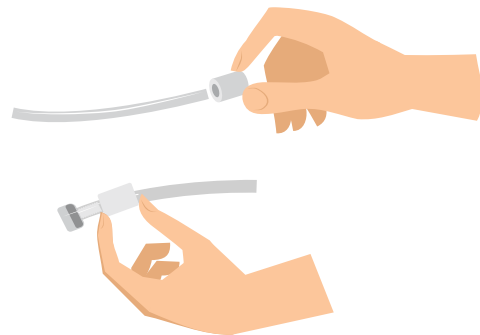


TIP

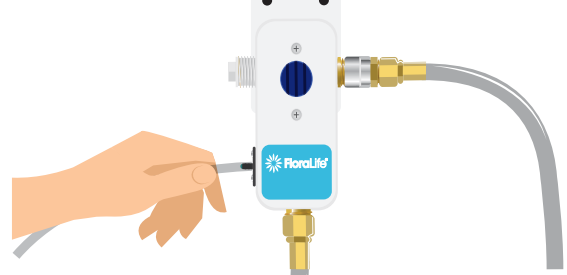
We would always recommend using a plumber to install the unit

Uptake tube and weight

1- Insert the uptake tube into the weight ceramic weight and then push the weight to the bottom of the tube where the filter is. This weight keeps the end of the tube at the bottom of the solution container to ensure uptake is continuous.

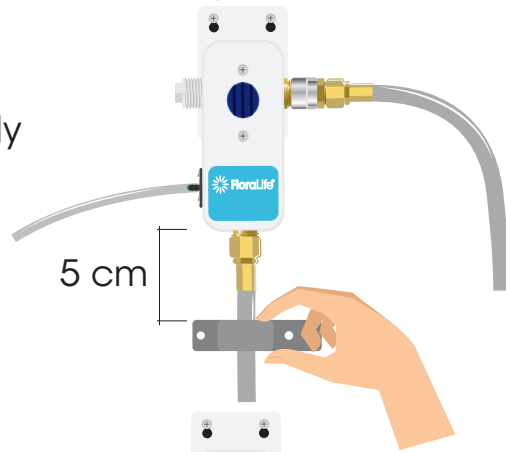


2- Attach the other end of the solution uptake tube to the unit by pushing firmly over the tip.

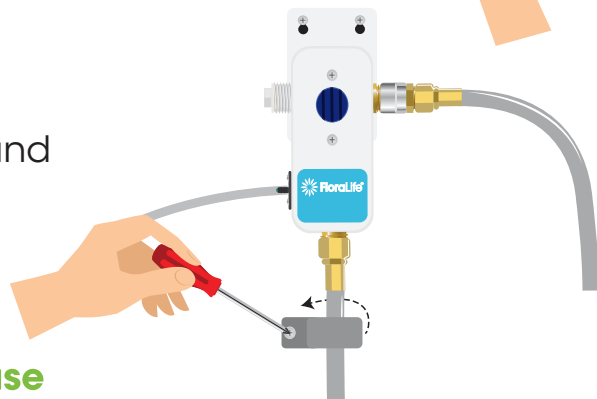


Installing hose anchor

1- Place the hose anchor over the dispensing gun hose approximately 5cm below the unit. This anchor protects the bottom of the unit, as the hose can be pulled in daily use and potentially damage the unit.

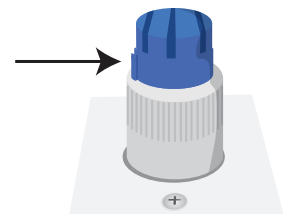


2- Fold the anchor around the hose and then attach to the wall/surface using the plug and screws, similar to how you installed the unit previously.



Removing the tab for first time use

1- You will notice on the blue on/off button there is a small tab. This must be removed to operate the unit.



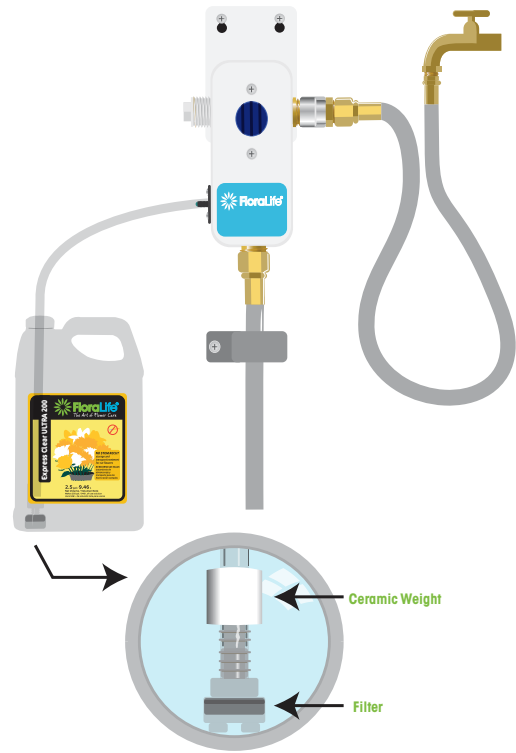
2- With a pointy object break back the tab. Now you will be able to press the on/off button in and turn clockwise to keep unit engaged.



FloraLife® Product

1- Place the uptake tube with ceramic weight into your chosen FloraLife® Product. Refer to dosing chart on page 7 to match your chosen FloraLife® Product with correct tip color.

2- Make sure the tube filter weight are at the bottom of the container.



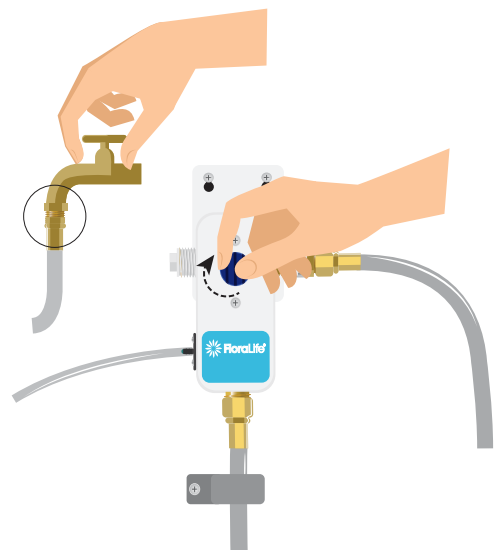
TIP

Regularly check this filter is clear of debris, this is a common reason why solution may not be drawn up the tube. If using FloraLife® Express solution you should be able to see foaming in the used solution, this indicates the technology is working!

Operating the unit

1- Firstly, you will want to turn on your water source and check there are no leaks.

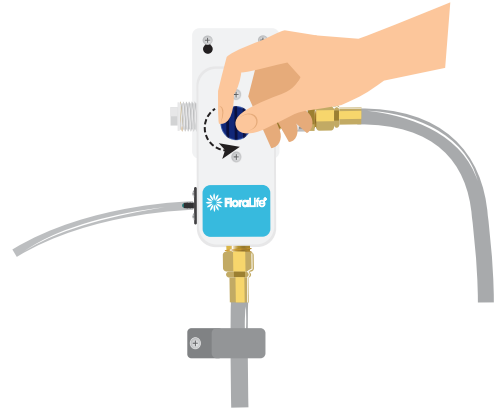
2- Next, press in the on/off button and turn clockwise. This will lock the unit in the engaged position.



3- Now you will be able to squeeze the dispenser gun and the solution will be dispensed from the unit pre-mixed with water at the correct rate.



4- When finished using the unit press in the on/off button and turn counterclockwise. The button will pop out and the unit will be turned off.



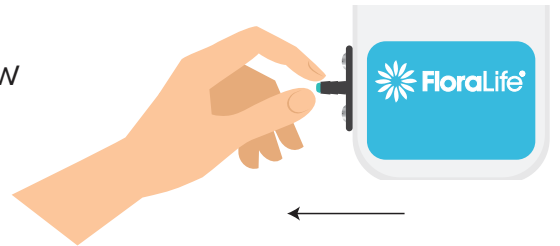
TIP

Once per month, flush the unit with Floralive Floral cleaner or a mixture of DCD solution mixed at 2 oz per gallon to clean the unit. Place the uptake tube that goes into your flower food solution into the floral cleaner or dcd solution and draw it through the unit for 30 seconds to ensure the cleaner has passed through the unit and hoses. Allow to sit for 5 minutes. Move the concentrate tube to a bucket of water and run for 1 minute.

Changing the dosing tip

PRODUCTS	TIP COLOR
FloraLife® Hydraflor 100	Teal
FloraLife® Express Clear 200	Brown
FloraLife® Clear 200	Brown
FloraLife® 200	Brown
FloraLife® Express Clear ULTRA 200	Pink
FloraLife® Clear ULTRA 200	Pink
FloraLife Crystal Clear®	Green
FloraLife® Express Universal 300	Green
FloraLife Crystal Clear® ULTRA	Red
FloraLife® Express ULTRA 300	Red
FloraLife® D.C.D.®	Green

1- To change the tip simply unscrew the current tip with your hand.



2- Next, screw in the new tip with your hand.

